

The Australian Statistical Geography Standard (ASGS) 2016 Structure and Summary

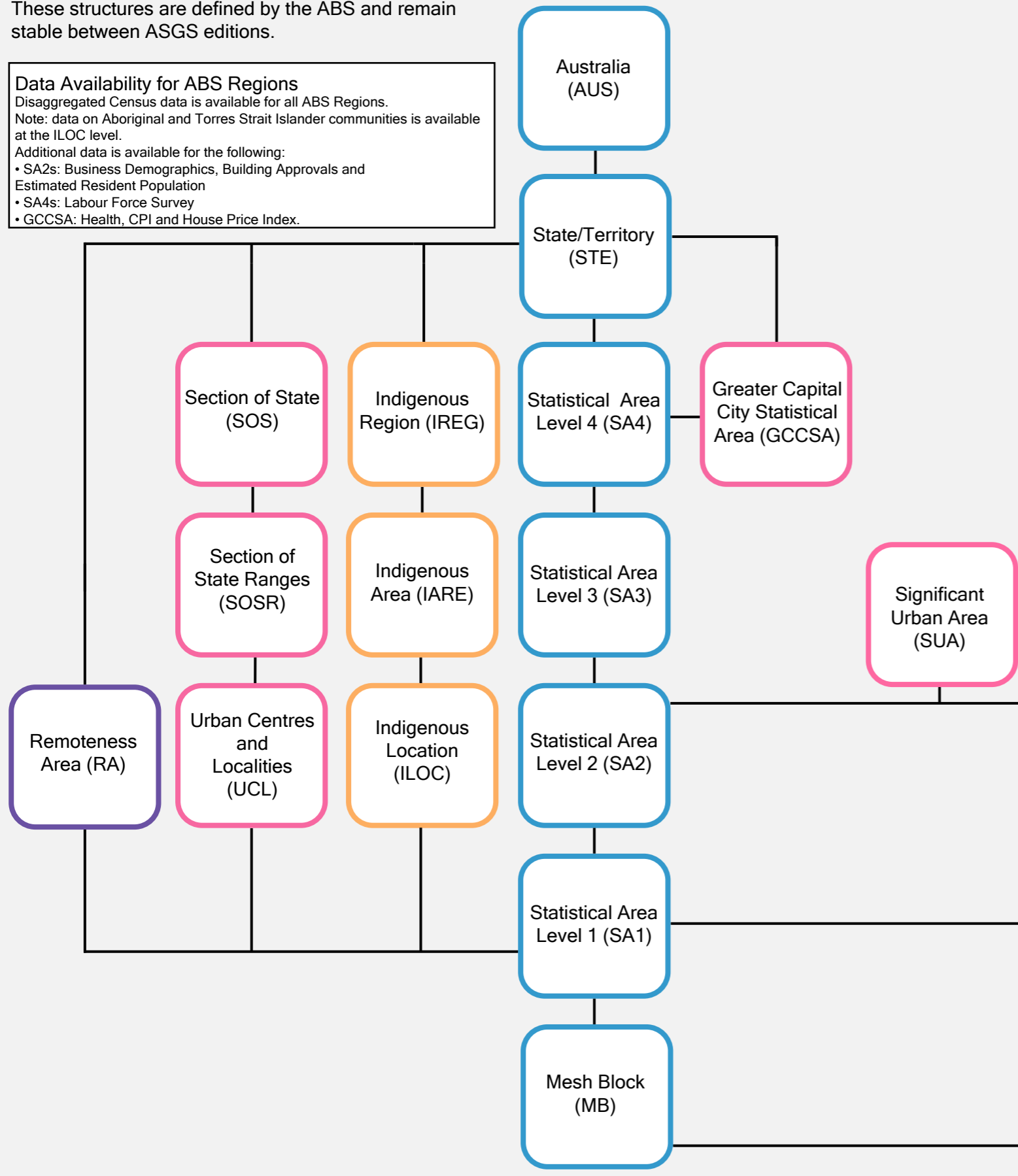
ABS Structures

These structures are defined by the ABS and remain stable between ASGS editions.

Data Availability for ABS Regions

Disaggregated Census data is available for all ABS Regions.
 Note: data on Aboriginal and Torres Strait Islander communities is available at the ILOC level.
 Additional data is available for the following:

- SA2s: Business Demographics, Building Approvals and Estimated Resident Population
- SA4s: Labour Force Survey
- GCCSA: Health, CPI and House Price Index.



Non ABS Structures

These structures are not defined by the ABS and are approximated using regions from the ABS Main Structure. These may be updated annually.

Data Availability for Non ABS Regions

Disaggregated Census data is available for all Non ABS Regions. Additional data is available for the following:

- Tourism Regions: Tourism data
- Postal Areas: Vehicle registration
- NRMRs: Agricultural and Environment data
- LGAs: Finance, Agriculture, Building Approvals and Estimated Residential Population.

